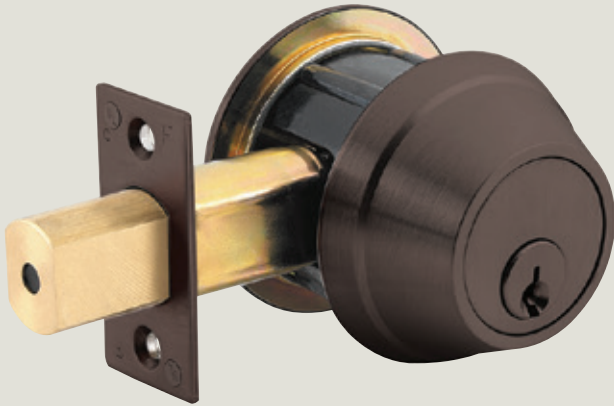


QDB200 Deadbolt

dormakaba 



More features for added security.

QDB200 series Grade 2 deadbolts have more built-in features for attack resistance. In addition to quality materials and construction, we added components to combat saw, drill, and wrench attacks. When you're choosing a deadbolt for light commercial applications, choose the name more people trust for their security.



The QDB200 series, makes it easy to order, customize, install, and maintain your standard-duty deadbolt for a wide range of applications.

Features

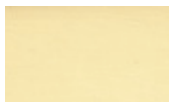
- **SmartKey™ flexibility.** An available re-key system to permit re-keying the lock without having to change or remove the product from the door, and an available key control function make the QDB200 series more versatile and convenient for use and maintenance.
- **Greater security.** Constructed with a full 1" steel throw bolt and hardened steel roller pin, two ball bearings, and free-spinning cylinder collar, QDB200 series deadbolts resist saw, drill, and wrench attacks.
- **Backed by leading warranties.** The QDB200 series comes with lifetime mechanical and three-year finish warranties.
- **Easy to retrofit.** Choose deadbolts with a SFIC option or keep your existing small format cores and use them with QDB200 series products. Standard door preparation makes retrofit quick and easy.
- **Flexible installation.** Compartmentalized packaging makes QDB200 deadbolts easier to install, and an adjustable backset deadbolt latch gives you greater flexibility at the point of installation.
- **Additional security features.** Depending on your application, available options like hurricane compliance can add an additional layer of reliability and security.
- **Short lead time.** Our QDB200 series deadbolts are available for immediate shipment.

Versatility and convenience.

With a wide range of available features, including re-key flexibility and an adjustable backset deadbolt latch, the QDB200 series deadbolts make installation, customization, and maintenance quick and easy.

QDB200 Standard Duty Deadbolt Specifications

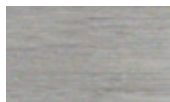
Certifications	ANSI/BHMA A156.12 Series (1999)—Grade 2 ANSI A117.1 Accessibility Code (ADA compliant) UL/cUL listed (3 hour) for "A" label single door applications (4' by 8') UL10C/UBC 7-2 (1997) positive pressure rated UL10B pressure rated Hurricane Compliant – Miami DADA N.O.A. ADA compliant thumb turn
Product Specifications	Exposed trim: stainless steel with iron forged cylinder guard Door range: 1 3/8" (35mm) – 2" (51mm); service part 8Q00082 spacer rings required for 1 3/8" doors Backset: 2 3/4" (70mm) square standard; 2 3/8" (60mm) available Strike: standard deadbolt strike 1 1/8" (32mm) x 2 3/4" (70mm); other options available Door prep: 2 1/8" (54mm) diameter cross bore Latch bolt: full 1" (25.4mm) throw with hardened steel roller Latch faceplate: 1 1/8" (29mm) x 2 1/4" (57mm) standard; 1" (25.4mm) x 2 1/4" (57mm) available
Keying	6-pin non-IC brass cylinders 6- or 7-pin SFIC option available Two keys per lockset Keying options include: master keying, grand master keying, construction keying Keyway options include: BF-SFIC "F," SMT-SmartKey™, KW-Kwikset, WE-Weiser, SC-Schlage, GA-Yale, LA-Sargent, LC-Less Cylinder
Functions	ANSI E0152 QDB280 Single Cylinder ANSI E0152 QDB281 Single Cylinder SFIC ANSI E0142 QDB282 Double Cylinder ANSI E0142 QDB283 Double Cylinder SFIC ANSI E0193 QDB284 Inside Turnbolt QDB285 Indicator ANSI E0172 QDB286 Classroom ANSI E0172 QDB287 Classroom SFIC ANSI E0152 QDB288 Key Control
Finishes	605: Bright Brass, 613: Oil Rubbed Bronze, 619: Satin Nickel, 625: Bright Chrome, 626: Satin Chrome
Warranties	Lifetime mechanical, three-year finish (613 carries no finish warranty)



605 Bright Brass



613 Oil-rubbed Bronze



619: Satin Nickel



625 Bright Chrome



626 Satin Chrome