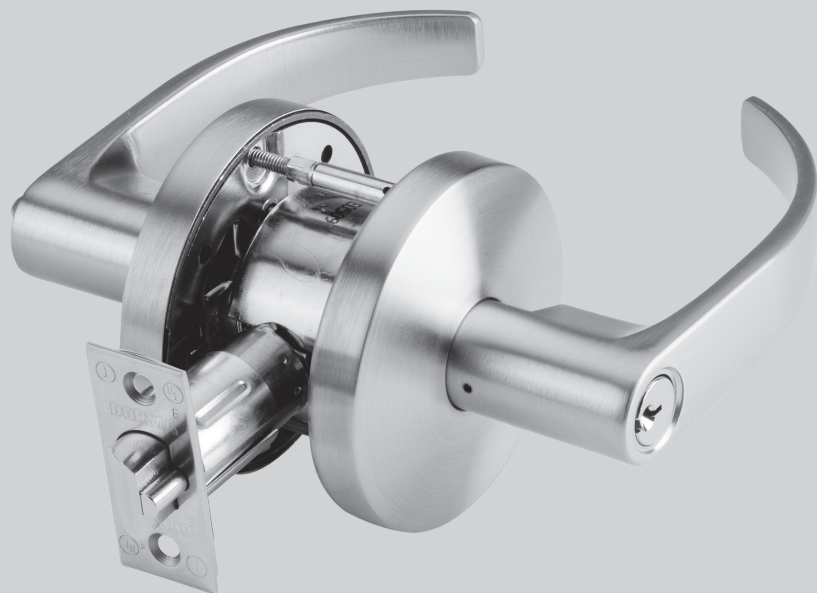


# C500 Grade 2 Cylindrical Locksets



# Grade 2 Cylindrical Locksets

## C500 Series

- 3 Features
- 4 Technical Details/Specifications

## How to Order

- 4 Locks
- 5 Keyways

## Trim Options

- 5 C500 LR Lever
- 5 C500 LC Lever
- 5 C500 LG Lever

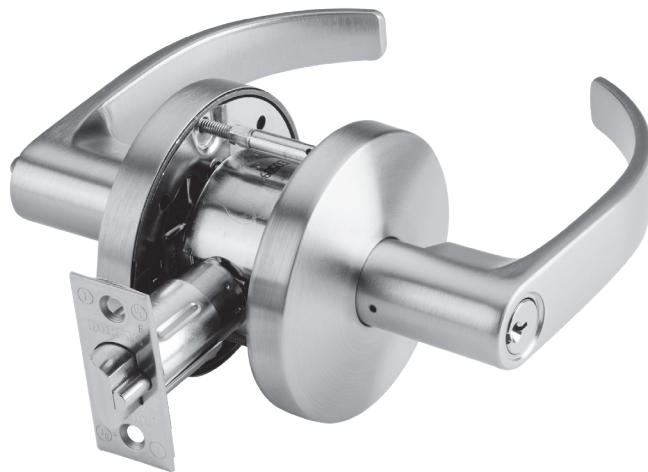
## Functions

- 6 Available Functions

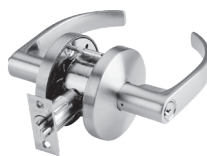
## Lock Options

- 7 Strikes
- 7 1/2" Throw Latch Bolt

dormakaba USA quality and environmental management systems in Indianapolis, IN are certified to ISO 9001:2015 and ISO 14001:2015.



LR Lever

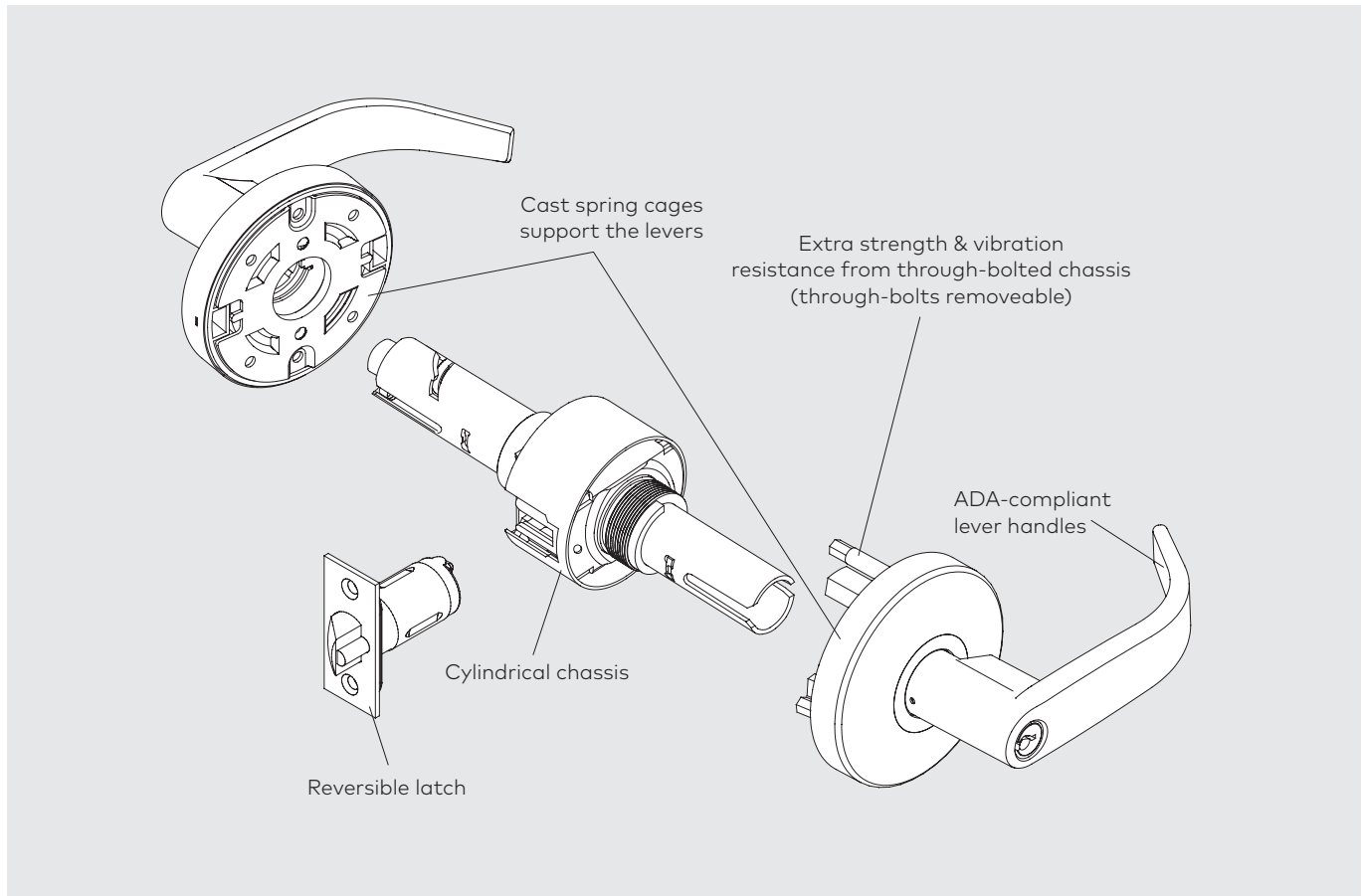


LC Lever



LG Lever

# C500 Series



## Providing security, aesthetics, and dependability at an affordable price.

These key-in-lever locksets are built with a high performance cylindrical chassis for all applications where ANSI/BHMA A156.2 Series 4000 Grade 2 products are required. To meet the aesthetic needs of your project, these versatile locks are available with three lever designs and six standard finishes. Complementing the aesthetic appeal of the C500

are the nine different functions to help solve your challenging applications.

### Features

- All C500 Series locks feature advanced design concepts, providing exceptional reliability, and are manufactured with the finest materials, delivering enhanced durability.
- C500 Series locks are easy to install in both wood or hollow metal doors with ANSI/BHMA A156.115 preparations for cylindrical locks.

- All C500 Series lever handle locks include special auxiliary support springs to ensure smooth operation and long life.
- C500 Series locksets have an optional through-bolted chassis for additional strength and increased resistance to vibration (through-bolting recommended).
- All C500 Series locks are easily adjustable for doors from 1-3/8"–1-3/4" thick. Consult the factory for product suggestions for thick door applications.

### Recommended Applications

- Hotels
- Apartments
- Churches
- Municipal Buildings
- Retail Complexes
- Offices
- Warehouses

**Technical Details**

- Non-handed for simple installation.
- Key-in-lever lock is through-bolted for additional strength and security.
- Thru bolts removable for retrofit applications.
- Lock chassis constructed of steel, stainless steel and precision castings for superior strength and corrosion resistance.
- Stainless steel latch bolt.
- Auxiliary deadlocking latch bolt for preventing manipulation when door is closed (all keyed functions).

**Certifications**

- ANSI/BHMA A156.2 Grade 2 certified.



- UL/CUL listed 3 hour fire rated. Locks are listed for A label and lesser class doors.
- Meets A117.1 accessibility code and ADA requirements for barrier-free accessibility.



**Cylinders and Keying**

- Unless otherwise specified, cylinders will be provided in DORMA standard keyway with two (2) nickel silver keys.
- Optional patented key system available.
- Refer to **Price List** for full details and options such as master keying, retrofit cylinders and keyways, and small format and full size interchangeable cores.

**Finishes**

- Brass: 605 (Bright, Clear Coated) or 606 (Satin)
- Bronze: 613 (Dark Oxidized Satin)
- Nickel: 619 (Satin)
- Chrome: 625 (Bright) or 626 (Satin)

**Special Finish Notes**

ANSI/BHMA A156.18 standards describe 613 Dark Oxidized Satin Bronze finish as a category B finish. B category finishes, "do not match from one alloy or form of material to the next and from one manufacturer to the next."  
The 613 finish may vary between manufacturers' products and models. In some instances, for customer

convenience, the most appropriate BHMA finish symbols are used to indicate similarity of appearance, regardless of base metal or finishing process. Finishes of latches, strikes, cylinders/cores, and visible mounting screws, though similar in appearance, may differ from the finish of the trim. Finish designations in the 600 numbers are the BHMA (Builders Hardware Manufacturers Association) industry standard.

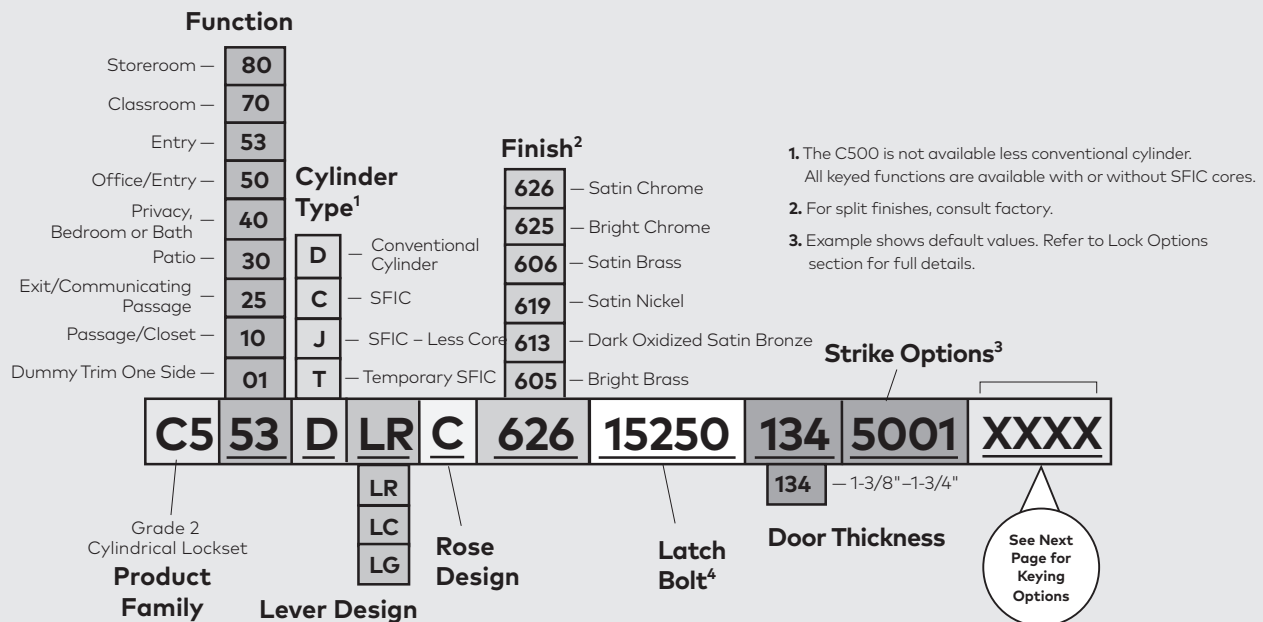
**Warranty**

For details, refer to **Limited Warranty** on our website at [go.dormakaba.com/Terms-DA](http://go.dormakaba.com/Terms-DA)

**Finish Availability Chart**

	613	619	626	605	606	625
LR	•	•	•	•	•	•
LC	•	•	•	•	•	•
LG	•	•	•	—	—	—

How to order C500 Series locks



**NOTE:** SFIC available on LR and LC lever designs only. Not available on LG lever.

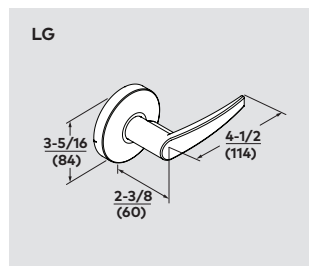
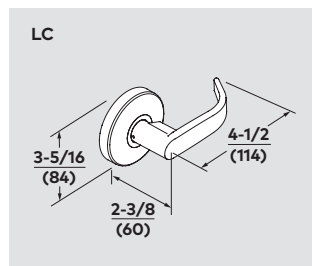
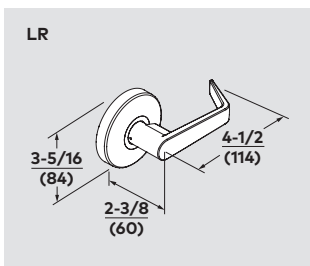
## How to order Keyways

<p><b>Standard Keyways</b></p>	<p><b>Keying</b></p> <ul style="list-style-type: none"> <li><b>OBIT</b> — 0-Bitted</li> <li><b>CMK</b> — Construction Master Keyed</li> <li><b>MKD</b> — Master Keyed</li> <li><b>NSK</b> — Keyed Alike, Sets of 3 or More</li> <li><b>KA2</b> — Keyed Alike, Sets of 2</li> <li><b>KD</b> — Keyed Different</li> </ul>	<p><b>IC Keyways</b></p>	<p><b>Keying</b></p> <ul style="list-style-type: none"> <li><b>TMP</b> — Temporary Construction Core</li> <li><b>MKD</b> — Combinated (Master Keyed)</li> </ul>				
<table border="1" style="margin: 0 auto;"> <tr> <td style="padding: 5px;"><b>SC</b></td> <td style="padding: 5px;"><b>KD</b></td> </tr> </table>		<b>SC</b>	<b>KD</b>	<table border="1" style="margin: 0 auto;"> <tr> <td style="padding: 5px;"><b>BA</b></td> <td style="padding: 5px;"><b>MKD</b></td> </tr> </table>		<b>BA</b>	<b>MKD</b>
<b>SC</b>	<b>KD</b>						
<b>BA</b>	<b>MKD</b>						
<ul style="list-style-type: none"> <li><b>SC</b> — Schlage C</li> <li><b>SE</b> — Schlage E</li> <li><b>D100</b> — DORMA SKC</li> </ul>		<ul style="list-style-type: none"> <li><b>BA</b> — Best A</li> <li><b>BB</b> — Best B</li> <li><b>BC</b> — Best C</li> <li><b>BD</b> — Best D</li> <li><b>BE</b> — Best E</li> <li><b>BF</b> — Best F</li> <li><b>BG</b> — Best G</li> <li><b>BH</b> — Best H</li> <li><b>BJ</b> — Best J</li> <li><b>BK</b> — Best K</li> <li><b>BL</b> — Best L</li> <li><b>BM</b> — Best M</li> <li><b>BQ</b> — Best Q</li> <li><b>TB</b> — Best TB</li> <li><b>D100</b> — DORMA SKC (7-pin Core only)</li> </ul>					
<p><b>Retrofit Keyways Available 0-Bitted Only</b></p> <ul style="list-style-type: none"> <li><b>AA</b> — Arrow A</li> <li><b>CA</b> — Corbin 60</li> <li><b>CB</b> — Corbin 67</li> <li><b>CC</b> — Corbin 77</li> <li><b>CD</b> — Corbin 59A1</li> <li><b>CE</b> — CorbinRusswin L4</li> <li><b>RA</b> — Russwin 981</li> <li><b>RB</b> — Russwin D1</li> <li><b>GA</b> — Sargent LA</li> <li><b>SF</b> — Schlage F</li> <li><b>YA</b> — Yale 8</li> <li><b>YG</b> — Yale GA</li> </ul>		<ul style="list-style-type: none"> <li><b>BLK</b> — Black Construction Core</li> <li><b>BLU</b> — Blue Construction Core</li> <li><b>GRN</b> — Green Construction Core</li> </ul> <p style="text-align: right;"><b>Specify Color If Required to Match Existing Project</b></p>					
<p><b>Keyway</b></p>		<p><b>Keyway</b></p>					

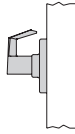
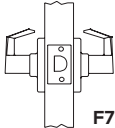
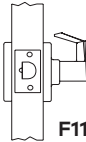
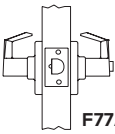
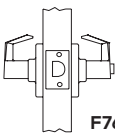
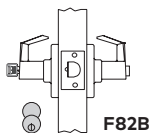
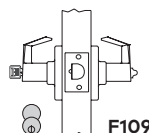
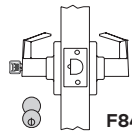
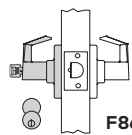
## Trim Options

### Lever Designs

ADA compliant levers feature solid cast handles. Levers with returns return to within 1/2" (12 mm) of the door face.



# Functions

Function	Series	Outside	Description
Dummy Trim One Side	C501		<ul style="list-style-type: none"> <li>Used as pull or matching trim on pairs of doors.</li> <li>Trim is through-bolted from opposite side.</li> </ul>
Passage/Closet	C510	 <b>F75</b>	<ul style="list-style-type: none"> <li>Latch bolt operated by trim either side at all times.</li> </ul>
Exit/Communicating Passage	C525	 <b>F111</b>	<ul style="list-style-type: none"> <li>Deadlocking latch bolt operated by inside trim.</li> <li>Blank plate outside.</li> <li>Minimum clearance 3/4" on single doors and 1-1/2" between double doors.</li> </ul>
Patio	C530	 <b>F77A</b>	<ul style="list-style-type: none"> <li>Deadlocking latch bolt operated by trim either side.</li> <li>Outside trim locked by push button or locking device inside.</li> <li>Outside trim unlocked by trim inside.</li> <li>Outside trim unlocked by closing door.</li> <li>Inside trim always unlocked.</li> <li>Do not use in rooms that have no other entrance.</li> </ul>
Privacy, Bedroom or Bath	C540	 <b>F76A</b>	<ul style="list-style-type: none"> <li>Latch bolt operated by trim either side.</li> <li>Outside trim locked by push button or locking device inside.</li> <li>Outside trim unlocked by emergency release outside.</li> <li>Outside trim unlocked by trim inside.</li> <li>Outside trim unlocked by closing door.</li> <li>Inside trim always unlocked.</li> </ul>
Office/Entry	C550	 <b>F82B</b>	<ul style="list-style-type: none"> <li>Deadlocking latch bolt operated by trim either side, except when outside trim locked by push button inside.</li> <li>Key outside releases push button, unlocking outside trim.</li> <li>Outside trim unlocked by trim inside.</li> <li>Operating inside trim releases push button, unlocking outside trim.</li> <li>Inside trim always operates latch bolt.</li> </ul>
Entry	C553	 <b>F109</b>	<ul style="list-style-type: none"> <li>Deadlocking latch bolt operated by trim either side, except when outside trim locked by push button inside.</li> <li>Key outside releases push button, unlocking outside trim, except when inside button pushed and turned to keep outside trim locked.</li> <li>Operating inside trim releases push button, unlocking outside trim, except when inside button pushed and turned to keep outside trim locked.</li> <li>Inside button must be turned to unlock outside trim.</li> <li>Inside trim always operates latch bolt.</li> </ul>
Classroom	C570	 <b>F84</b>	<ul style="list-style-type: none"> <li>Deadlocking latch bolt operated by trim either side, except when outside trim locked by key outside.</li> <li>Outside trim locked or unlocked by key outside.</li> <li>When outside trim locked, latch bolt operated by trim inside.</li> </ul>
Storeroom	C580	 <b>F86</b>	<ul style="list-style-type: none"> <li>Deadlocking latch bolt retracted by key outside.</li> <li>Deadlocking latch bolt operated by trim inside</li> <li>Outside trim always inoperable.</li> </ul>



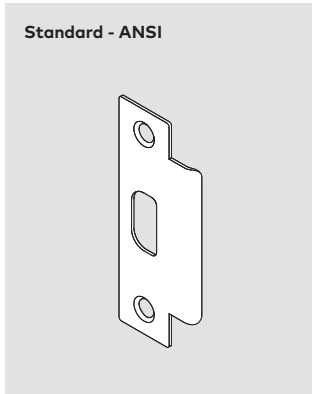
Indicates rigid lever.



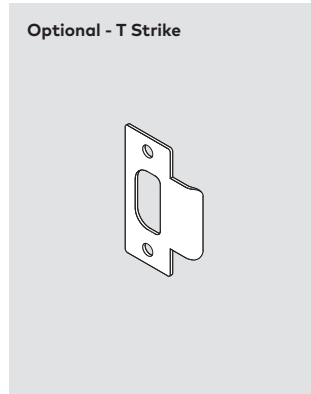
Indicates SFIC Core available.

# Lock Options

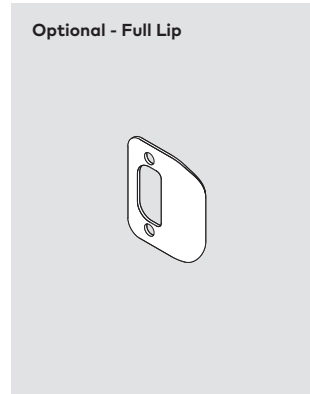
## Strikes



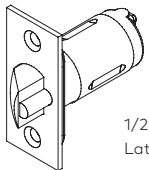
**5001** — ANSI 1-1/4" x 4-7/8" square corner strike. Default strike for all C500 Series locks.



**5101** — 1-1/8" x 2-3/4" square corner T-strike. 1-1/8" lip length. Dust box included.



**5201** — 1-5/8" x 2-1/4" square corner full curved lip strike. 1-1/8" lip length.  
**5202** — 1-5/8" x 2-1/4" full curved lip strike with 1/4" radiused corners. 1-1/8" lip length.

1/2" Throw Latch Bolt	Part Number				
	2-3/4" Backset 1" Faceplate Square Corner	2-3/4" Backset 1" Faceplate 1/4" Radius	2-3/4" Backset 1-1/8" Faceplate Square Corner	2-3/8" Backset 1" Faceplate Square Corner	2-3/8" Backset 1" Faceplate 1/4" Radius
 1/2" Throw Latch Bolt					

Functions (ANSI)					
C510 (F75)—Passage/Closet	<b>15230</b>	15231	15232	15130	15131
C525 (F111)—Exit/Communicating Passage	<b>15250</b>	15251	15252	15150	15151
C530 (F77A)—Patio	<b>15280</b>	15281	15282	15180	15181
C540 (F76A)—Privacy, Bedroom or Bath	<b>15230</b>	15231	15232	15130	15131
C550 (F109)—Office/Entry	<b>15250</b>	15251	15252	15150	15151
C553 (F109)—Entry	<b>15250</b>	15251	15252	15150	15151
C570 (F84)—Classroom	<b>15250</b>	15251	15252	15150	15151
C580 (F86)—Storeroom	<b>15250</b>	15251	15252	15150	15151
C501—Dummy Trim One Side	—	—	—	—	—

**NOTE:** Default options shown in bold.

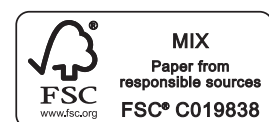
[www.dormakaba.us](http://www.dormakaba.us)



dormakaba USA Inc.  
Dorma Drive, Drawer AC  
Reamstown, PA 17567  
Tel: 800-523-8483  
Fax: 800-274-9724  
[archdw.us@dormakaba.com](mailto:archdw.us@dormakaba.com)

dormakaba Canada Inc.  
1680 Courtney Park Drive, Unit 13  
Mississauga, Ontario L5T 1R4  
Tel: 800-387-4938  
Fax: 905-670-5850  
[orders.canada@dormakaba.com](mailto:orders.canada@dormakaba.com)

dormakaba México, S. de R.L. de C.V.  
Calle Sur 110 no. 63, Col. Tolteca  
01150 Mexico, D.F.  
Tel: + 52 55 5272 6937 ext. 102  
[ventasdhw.mx@dormakaba.com](mailto:ventasdhw.mx@dormakaba.com)



07000386 • 1.19CT • 2M • USA