

C200 Grade 2 Cylindrical Locksets





C200 series heavy-duty cylindrical lock

Grade 2 Heavy-Duty Cylindrical Locksets	Features	3
	Technical Details	3
Ordering Guide	Locks	4
	Keyways	5
Functions	Available Functions	6
	Latch Options	7
Lock Options	Trim Options	5
	Strike Options	7
	Latch Bolt Options	7



dormakaba USA quality and environmental management systems are certified to ISO 9001:2008 and ISO 14001:2004.

C200 Grade 2 heavy-duty cylindrical lockset

Exceptional security, enhanced aesthetics, and rugged dependability.

These premium locks are built with a high performance cylindrical chassis for all applications where ANSI/BHMA A156.2 Series 4000 Grade 2 products are required. To meet the aesthetic needs of your project, these versatile locks are available in a range of trim designs.

Features

- C200 Series locks feature advanced design concepts for extreme reliability and are manufactured with the finest materials for exceptional durability.
- C200 Series locks are easy to install in both wood and hollow metal doors with ANSI/BHMA Standard A156.115 preparations for cylindrical locks.
- C200 Series lever handle locks include special spring assemblies designed to hold the levers in the correct position.
- C200 Series lever locks are through-bolted for additional strength and reliability.
- C200 Series lever locks are easily adjustable to

accommodate doors from 1-3/8"–2" thick without spacers or special tools.

Recommended Applications

- Hotels
- Apartments
- Churches
- Municipal Buildings
- Retail Complexes
- Offices

Technical Details

- Non-handed for simple installation.
- Auxiliary deadlocking latch bolt.
- Lock chassis constructed of steel and stainless steel components for superior strength and corrosion resistance.

Certifications

- ANSI/BHMA A156.2 Grade 2 certified.
- Meets A117.1 accessibility code and ADA requirements for barrier-free accessibility.
- UL listed 3 hour fire rated. Locks with 1/2" throw latch bolts are listed for A label and



lesser class doors, 4'0" x 8'0" maximum per leaf.



Cylinders and Keying

- Unless otherwise specified, cylinders will be provided in standard keyway with two (2) nickel silver keys.
- Optional patented key system available.
- Refer to Price List for full details and options such as master keying, retrofit cylinders and keyways, and small format and full size interchangeable cores.

Finishes

- Brass: 605 (Bright), or 606 (Satin).
- Bronze: 612 (Satin) or 613 (Dark Oxidized Satin).
- Chrome: 625 (Bright) or 626 (Satin).

Special Finish Notes

ANSI/BHMA A156.18 standards describe 613 Dark Oxidized Satin Bronze finish as a category B finish. B category finishes, "do not match from one alloy or form of material to the next and from one manufacturer to the next." The 613 finish may vary between

manufacturers' products and models.

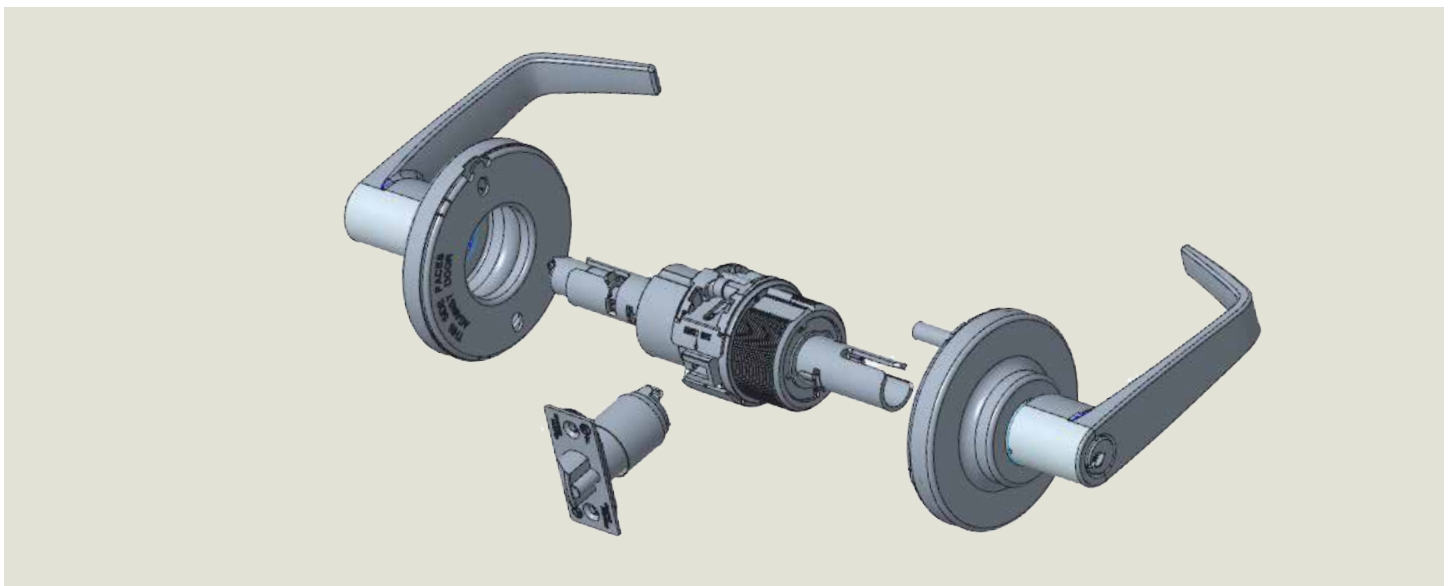
In some instances, for customer convenience, the most appropriate BHMA finish symbols are used to indicate similarity of appearance, regardless of base metal or finishing process. Finishes of latches, strikes, cylinders/cores, and visible mounting screws, though similar in appearance, may differ from the finish of the trim. Finish designations in the 600 numbers are the BHMA (Builders Hardware Manufacturers Association) industry standard.

Security Screws

Torx® tamper-resistant screws are available for all exposed screws. Specify TX.

Warranty

For details, refer to Warranty Statement.



How to order C200 series lock

Function		Cylinder Type		Finish		Door Thickness		Strike Options ¹		Lip Length	
Storeroom	80			626	Satin Chrome						
Classroom	70			625	Bright Chrome						
Entry	53			613	Dark Oxidized Satin Bronze						
Entry/Office	50			612	Satin Bronze						
Privacy, Bedroom or Bath	40			606	Satin Brass						
Patio	30	D	Conventional Cylinder	605	Bright Brass						
Exit/Communicating Passage	25	L	Less Cylinder								
Exit	12	J	SFIC (Less Core)								
Passage/Closet	10	T	Construction Core SFIC								
Dummy Trim One Side	01										

Lever Trim	C	2	53	D	LR	E	626	TX	17252	134	2001	1316	XXXX
Product Type	Grade 2 Cylindrical Lockset				Lever Design	3-7/16" Dia. Rose	Security Screws		Latch Bolt¹	134	-1-3/8" - 1-3/4"		See next page for keying options

1. Example shows default values. Refer to Lock Options section or price book for full details.

How to order keyways

Standard Keyways

IC Keyways

Keying

- OBIT** — O-Bitted
- CMK** — Construction Master Keyed
- MKD** — Master Keyed
- NSK** — Non-Stock Keyed
- KA4** — Keyed Alike, Sets of 4
- KA2** — Keyed Alike, Sets of 2
- KD** — Keyed Different

SC	KD
-----------	-----------

- SC** — Schlage C
- SE** — Schlage E
- D100** — DORMA SKC
- CA** — Corbin 60
- CD** — Corbin 59A1
- CE** — CorbinRusswin L4
- RA** — Russwin 981
- RB** — Russwin D1
- GA** — Sargent LA
- SF** — Schlage F
- WA** — Weiser E
- YA** — Yale 8
- YG** — Yale GA

Retrofit Keyways Available O-Bitted Only

Keyway

Keying

- TMP** — Temporary Construction Core
- MKD** — Combined (Master Keyed)

BA	MKD
-----------	------------

- BA** — Best A
- BB** — Best B
- BC** — Best C
- BD** — Best D
- BE** — Best E
- BF** — Best F
- BG** — Best G
- BH** — Best H
- BJ** — Best J
- BK** — Best K
- BL** — Best L
- BM** — Best M
- BQ** — Best Q
- D100** — DORMA SKC (7-pin Core only)
- BLK** — Black Construction Core
- BLU** — Blue Construction Core
- GRN** — Green Construction Core

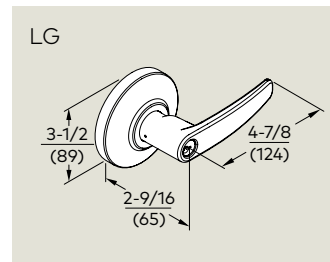
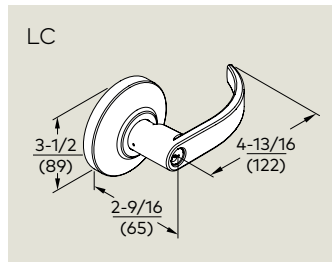
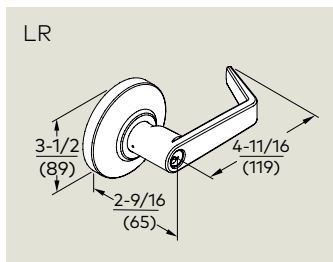
NOTE: All cores are ordered as a separate line item.

Specify Color If Required to Match Existing Project

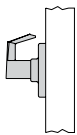
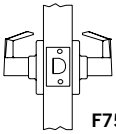
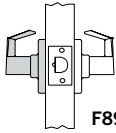
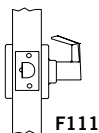
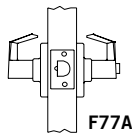
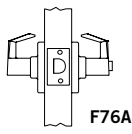
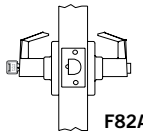
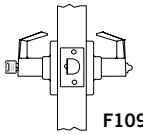
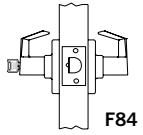
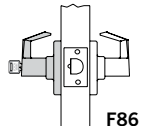
Keyway


Trim Options

Lever Designs



Functions

Function	Series	Outside/Inside	Description
Dummy Trim One Side	C201		Used as pull or matching trim on pairs of doors. Trim is surface mounted.
Passage/Closet	C210	 F75	Latch bolt operated by trim from either side at all times.
Exit	C212	 F89	Deadlocking latch bolt retracted by trim from inside at all times. Outside trim always rigid. Inside trim always unlocked.
Exit/ Communicating Passage	C225	 F111	Deadlocking latch bolt operated by inside trim. Blank plate outside. Minimum clearance 1" on single doors and 2" between double doors.
Patio	C230	 F77A	Deadlocking latch bolt operated by trim from either side. Outside trim locked by push button or locking device inside. Outside trim unlocked by inside trim. Outside trim unlocked by closing door. Inside trim always unlocked. Do not use in rooms that have no other entrance.
Privacy, Bedroom or Bath	C240	 F76A	Latch bolt operated by trim from either side. Outside trim locked by push button or locking device inside. Outside trim unlocked by emergency release from outside. Outside trim unlocked by inside trim. Outside trim unlocked by closing door. Inside trim always unlocked.
Entry/Office	C250	 F82A	Deadlocking latch bolt operated by trim from either side, except when outside trim locked by push button inside. Key outside releases push button, unlocking outside trim. Operating inside trim releases push button, unlocking outside trim. Inside trim always operates latch bolt.
Entry	C253	 F109	Deadlocking latch bolt operated by trim from either side, except when outside trim locked by push button inside. Key outside releases push button, unlocking outside trim, except when inside button pushed and turned to keep outside trim locked. Operating inside trim releases push button, unlocking outside trim, except when inside button pushed and turned to keep outside trim locked. Inside button must be turned to unlock outside trim. Inside trim always operates latch bolt.
Classroom	C270	 F84	Deadlocking latch bolt operated by trim from either side, except when outside trim locked by key from outside. When outside trim locked, latch bolt is operated by key in outside trim. When outside trim locked, latch bolt operated by inside trim.
Storeroom	C280	 F86	Deadlocking latch bolt retracted by key in outside trim. Deadlocking latch bolt operated by inside trim. Outside trim always inoperable.

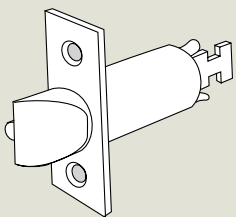
 Indicates rigid or inoperable lever.

Latch Options

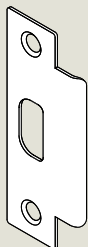
Available Latches

Ref. #	Throw	Backset	Face	Functions
17150	1/2"	2-3/8"	1", Square Corner	212, 250, 270, 280, 253, 225, 210
17151	1/2"	2-3/8"	1", 1/4" Radius	212, 250, 270, 280, 253, 225, 210
17152	1/2"	2-3/8"	1-1/8", Square Corner	212, 250, 270, 280, 253, 225, 210
17180	1/2"	2-3/8"	1", Square Corner	230, 240
17181	1/2"	2-3/8"	1", 1/4" Radius	230, 240
17182	1/2"	2-3/8"	1-1/8", Square Corner	230, 240
17250	1/2"	2-3/4"	1", Square Corner	212, 250, 270, 280, 253, 225, 210
17251	1/2"	2-3/4"	1", 1/4" Radius	212, 250, 270, 280, 253, 225, 210
17252	1/2"	2-3/4"	1-1/8", Square Corner	212, 250, 270, 280, 253, 225, 210
17280	1/2"	2-3/4"	1", Square Corner	230, 240
17281	1/2"	2-3/4"	1", 1/4" Radius	230, 240
17282	1/2"	2-3/4"	1-1/8", Square Corner	230, 240
17350	1/2"	3-3/4"	1", Square Corner	212, 250, 270, 280, 253, 225, 210
17351	1/2"	3-3/4"	1", 1/4" Radius	212, 250, 270, 280, 253, 225, 210
17352	1/2"	3-3/4"	1-1/8", Square Corner	212, 250, 270, 280, 253, 225, 210
17380	1/2"	3-3/4"	1", Square Corner	230, 240
17381	1/2"	3-3/4"	1", 1/4" Radius	230, 240
17382	1/2"	3-3/4"	1-1/8", Square Corner	230, 240
17550	1/2"	5"	1" Square Corner	212, 250, 270, 280, 253, 225, 210
17551	1/2"	5"	1", 1/4" Radius	212, 250, 270, 280, 253, 225, 210
17552	1/2"	5"	1- 1/8" Square Corner	212, 250, 270, 280, 253, 225, 210
17580	1/2"	5"	1" Square Corner	230, 240
17581	1/2"	5"	1", 1/4" Radius	230, 240
17582	1/2"	5"	1- 1/8" Square Corner	230, 240

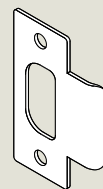
1/2" Throw Latch Bolt



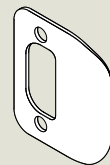
Standard - ANSI



Optional - T Strike



Optional - Full Lip



NOTES:

- 2-3/4" backset with 1/2" throw is the C200 Series default.
- Links for 3-3/4" and 5" backset require 2-3/8" backset latches.

2001 — ANSI 1-1/4" x 4-7/8" strike. 1-3/16" lip length. Default strike for all C200 Series locks.

71547007 ANSI plastic dust box for 2001 ANSI strike.

Dust box included.

2101 — 1-1/8" x 2-3/4" square T-strike. 1-1/8" lip length. Optional for C200 Series locks.

2102 — 1-1/8" x 2-3/4" T-strike with radiused corners. 1-1/8" lip length. Optional for all C200 Series locks. For optional 1-1/2" lip length, specify 2101-112 or 2102-112.

2201 — 1-5/8" x 2-1/4" full curved lip strike with square corners. 1-1/8" lip length. Optional for all C200 Series locks.

2202 — 1-5/8" x 2-1/4" full curved lip strike with 1/4" radiused corners. 1-1/8" lip length. Optional for all C200 Series locks.

dormakaba USA, Inc
6161 E. 75th Street
Indianapolis, IN 46250
Tel: 800 523 8483

dormakaba Canada Inc
7301 Decarie Blvd
Montreal, QC H4P 2G7
888 539 7226

www.dormakaba.us | 855-365-2407