

## ENERGY EFFICIENCY

Thermal Transmission Coefficient

**$U_w$  from 0,8 (W/m<sup>2</sup>K)**

Please consult typology, dimensions and glazing

## ACCOUSTIC INSULATION

Maximum glazing: **65 mm**

Maximum acoustic insulation: **Rw = 46 dBA**

## CATEGORIES ACHIEVED AT TEST CENTRE

Protection against atmospheric agents

Air permeability (EN 12207):

**Class 4**

Water tightness (EN 12208):

**Class E1950**

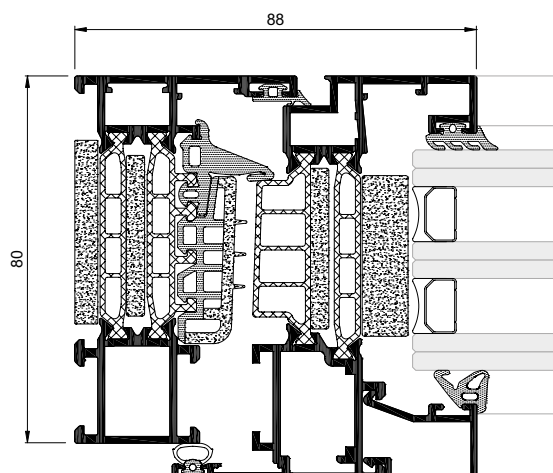
Wind resistance (EN 12210):

**Class C5**

Reference test: window 1,23 x 1,48 m 2 sashes

<b>SECTIONS</b>	Frame 80 mm Sash 88 mm	<b>EXTRUSION ALLOY</b>	6063 T-5
<b>PROFILE THICKNESS</b>	Window 1,5 mm Door 1,7 mm	<b>POLYAMIDE STRIP LENGTH</b>	Polyamide 6.6 reinforced with 25% fiberglass: 45 mm
<b>MAXIMUM DIMENSIONS</b>	Width (L) = 1.500 mm Height (H) = 2.600 mm	<b>GASKETS</b>	EPDM triple gasket
<b>MAXIMUM WEIGHT/SASH</b>	160 Kg	<b>FOAMS</b>	Perimeter polyolefin foam in glazing rebate zone
<b>FINISHES</b>	Colour powder coating (RAL, mottled, rough...) According to Qualicoat >60 microns	<b>OPENING POSSIBILITIES</b>	
	Wood effect powder coating According to Qualideco standard	<b>INWARDS</b>	Side hung, turn&tilt, parallel-tilt and bottom hung
<b>HARDWARE</b>	Anodized According to Ewwa Euras Standard Class 15 Optionally Class 20 and 25 Optionally bicoloured	<b>OUTWARDS</b>	Side hung and top hung
	Optionally concealed hinges Optionally security hardware		

Please consult regarding maximum weight and dimensions according to types



## ENERGY EFFICIENCY

Thermal Transmission Coefficient

**$U_w$  from 0,66 (W/m<sup>2</sup>K)**

Please consult typology, dimensions and glazing

## ACCOUSTIC INSULATION

Maximum glazing: **65 mm**

Maximum acoustic insulation: **Rw = 46 dBA**

## CATEGORIES ACHIEVED AT TEST CENTRE

Protection against atmospheric agents

Air permeability (EN 12207):

**Class 4**

Water tightness (EN 12208):

**Class E<sub>1950</sub>**

Wind resistance (EN 12210):

**Class C5**

Reference test: window 1,23 x 1,48 m 2 sashes

SECTIONS	Frame 80 mm Sash 88 mm	EXTRUSION ALLOY	6063 T-5
PROFILE THICKNESS	Window 1,6 mm	POLYAMIDE STRIP LENGTH	Polyamide 6.6 reinforced with 25% fiberglass: 45 mm
MAXIMUM DIMENSIONS	Width (L) = 1.500 mm Height (H) = 2.600 mm	GASKETS	EPDM triple gasket
MAXIMUM WEIGHT/SASH	160 Kg	FOAMS	Perimeter polyolefin foam in glazing rebate zone
FINISHES	Colour powder coating (RAL, mottled, rough...) According to Qualicoat >60 microns	OPENING POSSIBILITIES	
	Wood effect powder coating According to Qualideco standard	INWARDS	Side hung, turn&tilt, parallel-tilt and bottom hung
HARDWARE	Anodized According to Ewwa Euras Standard Class 15 Optionally Class 20 and 25 Optionally bicoloured	OUTWARDS	Side hung and top hung
	Optionally concealed hinges Optionally security hardware		

Please consult regarding maximum weight and dimensions according to types

